

August 2023 Newsletter

[View this email in your browser](#)



In this issue:

- [A Letter From The President](#)
- [Spotlight on BOG Series](#)
- [September Chapter Meeting](#)
- [Bluegrass ASHRAE Golf Tournament](#)
- [Region VII 2022 CRC](#)
- [Technical Features and News](#)
- [ASHRAE Society Announcements](#)
- [Follow Bluegrass ASHRAE!](#)
- [Advancing your Membership. It's Easy!](#)

Upcoming Dates:

- Chapter Meeting: September 13th
- Bluegrass ASHRAE Golf Tournament: October 13th

A Letter From The President

Hello everyone and welcome to the 2023-2024 year in the Bluegrass Chapter. I am honored to serve as your chapter president this year. The Bluegrass Chapter has had exceptional leadership with both the President and Board of Governors over the last several years and we are looking forward to working hard to fill those shoes!

The region just wrapped up our annual Chapters Regional Conference (CRC) which took place in Louisville this year. We were fortunate enough to have current ASHRAE President, Ginger Scoggins, attend the conference and deliver her presidential address in person. The Society's theme for the year is "Challenge Accepted: Tackling the Climate Crisis." We have all seen the sweeping changes being made to combat the climate crisis (low GWP refrigerants, new DOE efficiency requirements, push to electrification, etc). ASHRAE is uniquely positioned to lead the charge on affecting the impact of the built environment on climate change. This impact begins at the chapter level with all of us as members. I have had the privilege of seeing Bluegrass members serve on technical and standards committees, serve as leaders in

“ASHRAE has accepted the challenge of our time... **and we need you to join us.**

Let's learn as much as we can and implement what we learn.

Let's build a better world for ourselves, our children and for generations to come.”

That being said, we have another exciting year planned with new programs and several events that will look familiar. We will have the annual golf scramble at Houston Oaks on October 13th, our technical tour and holiday party in December, the technical seminar and Keeneland tailgate in April, and the cornhole tournament at a date TBD. Our first program will be September 13th...check your monthly newsletter and our website for more details.

I am looking forward to seeing everyone in September!

Will Perkins
President, Bluegrass Chapter



Introducing the Spotlight on BOG Series

Have you ever wondered what it takes to run an ASHRAE chapter? Have you ever considered getting more involved with ASHRAE, but weren't sure how to begin? Do you not even know what BOG stands for? Then this series is for you. In every newsletter this chapter year, a different committee will be highlighted to help our members learn what it takes to run the Bluegrass ASHRAE chapter, and who is behind the scenes. This month's edition will highlight our officers for the 23-23 chapter year. If you read about a position or committee that interests you, reach out to any of our board members to learn more about getting involved!

What is the BOG?

BOG stands for Board of Governors. The Bluegrass ASHRAE BOG consists of 4 officers, and is supported by committees, which we will highlight throughout the year. The BOG meets monthly to discuss chapter operations, plan future events, and receive updates from each committee chair. If you're curious about what else goes on at a BOG meeting, they are open to members. Please reach out to an officer if you're interested in attending and learning more.

Officers

President – Will Perkins

president, they serve as the alternate delegate for our chapter at the CRC (Chapter Regional Conference). As outgoing president, they serve as the chapter's delegate. They attend regional meetings to report out on the efforts of our chapter.

President-Elect – Joshua Rice, PE

The President-Elect is the incoming president for the next chapter year. The president-elect makes sure the chapter is actively keeping up with PAOE* points and presidential initiatives. They back up the president in case of absence, and shadow the president to prepare for their future presidency.

Treasurer – Diego Rich

The treasurer is responsible for the Chapter Finances. They create a budget for the chapter year with input from the committee chairs, provide a report at the monthly BOG meeting, pay for expenses at meetings at events, collect fees, interact with banks, etc.

Secretary – Abby Hoovler

The secretary is in charge of maintaining chapter records and acts as the liaison between the chapter and Society Headquarters. They take meeting minutes at BOG meetings and distribute these to the BOG with an action item list from the meeting.

*PAOE – The Presidential Award of Operational Excellence is a society-wide point system to track and reward chapter achievements. Each year, the Society President establishes the point-earning activities. This keeps chapters active and engaged and working toward society goals. Each committee chair enters their PAOE points earned, and we can earn regional awards for our participation levels.

If you're interested in learning more, check out ASHRAE's [Manual for Chapter Operations \(MCO\)](#).



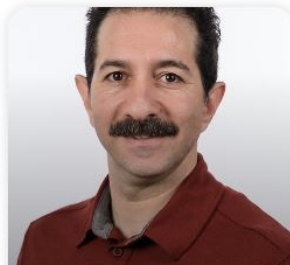
Will Perkins

President



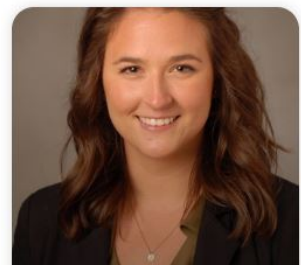
Joshua Rice, PE

President-Elect



Diego Rich

Treasurer



Abby Hoovler

Secretary

The ASHRAE Building Decarbonization Strategy Game

When: September 13, 12-1pm

Summary: Test your knowledge of building decarbonization strategy through participation in this interactive program. The audience competes to see who can match common building decarbonization planning practices and improvement measures with the appropriate definitions and rank them in order of highest relative importance. The building decarbonization measures and practices cover a range of topics including project planning and delivery; building systems and equipment; building operations; and renewable energy. The session ends with a discussion of priorities for addressing building industry education and training gaps.



Presenter: Donald Colliver, Ph.D., P.E. | Professor University of Kentucky

Donald “Don” Colliver has been involved in the energy usage and efficiency of buildings for over 40 years. He is Professor in the Biosystems Engineering Department and a licensed Professional Engineer in the Commonwealth of Kentucky.

Don was the ASHRAE Society President in 2002-2003 and was chosen to be the initial Co-Chair of the ASHRAE Task Force for Building Decarbonization (TFBD). He currently serves as its Vice Chair. He will be leading an interactive game developed by the TFBD that serves an introduction to strategies to decarbonize buildings.

Don has lectured in 20 countries with his teaching emphasis in solar PV systems design; indoor environmental control; industrial energy auditing; building energy modeling and analysis; decarbonization; and sustainable design.

He was awarded a doctorate from Purdue University; and is a hiker, viticulturist, and a retired soccer referee.

Where:

TES

680 Bizzell Drive

Ticket Options (In Person Only):

Member - \$15

Non-Member - \$20

Student Member - FREE

[RSVP Here](#)

Bluegrass ASHRAE Golf Tournament



10th Annual Bluegrass ASHRAE Invitational Golf Outing

Open to public guests

Friday, October 13, 2023**Houston Oaks Golf Course****Event Schedule:**8-8:45am breakfast,
registration, networking

- Sign-in & Registration
- Light breakfast and coffee
- Buy your mulligans, strings, skirts
- Driving range open
- Marshmallow Drive

8:45am Announcements & Rules Review

9:00am Shotgun Start (scramble format)

- Cookout boxed lunch on course
- Beverage Cart on course

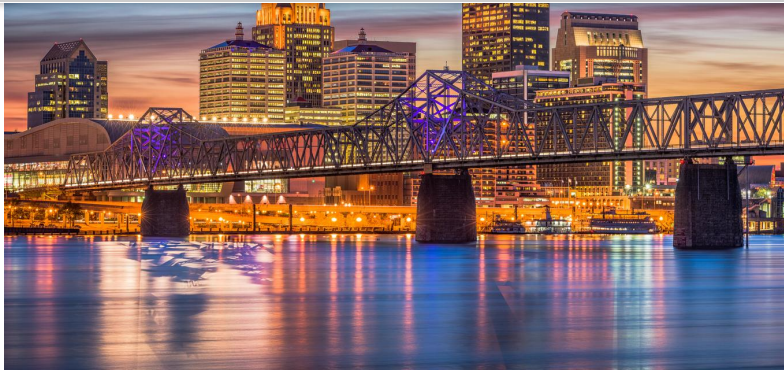
~3:00pm Awards and door prizes

Save the date, registration details coming soon!

All proceeds from the event to benefit ASHRAE Research Promotion

Region VII 2023 CRC

A big thank you to all officers, delegates, and volunteers who represented the Bluegrass Chapter at this year's Chapter Regional Conference in Louisville, KY. The event was a great success and we look forward to next year's conference in Memphis, TN.



Research Promotion Update and Sponsorship Opportunity

Greetings all, and welcome to our 2023-2024 chapter year and associated RP (Research Promotion) campaign. Research Promotion is ASHRAE's annual drive to secure funding to support the research and development efforts organized by the many technical committees in ASHRAE. There are goals for RP funds raised at the chapter, region, and society level - we all play our part.

As we look to exceed our excellent RP performance from last year, we've decided to offer advertisement space on our newsletter each month - this will be similar to the advertisement space seen on many society level newsletters and updates.

Our newsletter is sent to more than 200 members and industry contacts throughout our membership area, with approximately 10 newsletters sent per year.

We will offer (2) banner ad locations for each newsletter, priced at \$50/ea per month. **100% of ad revenue will go directly to ASHRAE RP.** To purchase ad space, please contact Chapter RP Chair, David Rose, at c128@ashrae.net

Thank you for your continued support as we work to continue to support and improve our industry at the local level and beyond.

Technical Features and Government Affairs News

ASPE KY Bluegrass Chapter Golf Outing

The American Society of Plumbing Engineers is hosting a golf outing September 25, 2023 at Heritage Hills Golf Club in Shepherdsville, KY. Check out the event [flyer](#) for more details on how to participate.

Gov Affairs Update: Upcoming Webinar - Guidance to Control Airborne Infection Risks - What Schools Need to Know

schools can use to help reduce airborne infection risks. This webinar is scheduled for **August 23, 1:00 -2:00 p.m. ET**, and you will hear from speakers **Dr. William Bahnfleth**, Chair of the ASHRAE Standard 241 Project Committee, and **Dr. Kenneth Mead** from the CDC. [Register now!](#)

August 2023 Digital Journal

In case you missed it - This month's issue of ASHRAE Journal includes topics such as the newly published ASHRAE Standard 241 Control of Infectious Aerosols, AI in refrigeration and CFD analysis of a pharmaceutical cleanroom.

[Click Here to Read the Journal](#)

ASHRAE Society Announcements

ASHRAE Jobs Board

Check out the [ASHRAE Jobs Board](#) for useful career tips and tools, relevant job postings in the industry, and to quickly find the right professionals for your open positions.



Follow Bluegrass ASHRAE!

Did you know that we are on LinkedIn and Facebook? Follow us here for the latest and greatest in Chapter and National news!



Are You An Associate Who Wants to Advance to Member?

**ASHRAE**

1791 Tullie Circle, N.E.
Atlanta, Georgia 30329-2305
404-636-8400
www.ashrae.org

To order additional copies
of this brochure, to share
with your colleagues,
visit the membership page at:
www.ashrae.org/members



Connect with ASHRAE

**ASHRAE represents
the industry's leading
HVAC&R professionals,
working to make the
world a better
place to live.**



To advance from Associate to Member, you must update your ASHRAE bio online, and notify membership@ashrae.org that you have an updated bio and wish to be considered for grade advancement.
Steps for updating your biography:

1. Log into www.ashrae.org by selecting 'Join or Login' in the upper right corner. Enter your email address and password then select 'Sign In.'
2. Hover over the 'Membership & Conferences' tab and select 'My Membership.'
3. Under 'Manage Personal Information,' select 'Change Your Address/View or Edit Your Profile.'
4. Select the 'Edu. Pro. Reg' link located in the blue font above your name. Add all of your educational history, relevant professional licenses and work history.
5. Confirm that your contact information is current by clicking on 'Contact Info.'

For information on what experience qualifies for advancement, please see Section 2.7 of the [ASHRAE Bylaws](#).

Bluegrass ASHRAE

ASHRAE, founded in 1894, is a building technology society with more than 50,000 members worldwide. The Society and its members focus

[Subscribe](#)

[Past Issues](#)

[Translate ▼](#)

[RSS](#)

This email was sent to <<Email Address>>

[why did I get this?](#) [unsubscribe from this list](#) [update subscription preferences](#)

Bluegrass ASHRAE · 801 Corporate Drive · Lexington, KY 40503 · USA

