

September 2024 Newsletter

[View this email in your browser](#)



In this issue:

- [A Letter From The President](#)
- [2024-2025 Chapter Officers](#)
- [September Chapter Meeting](#)
- [Bluegrass ASHRAE Golf Scramble](#)
- [Technical Features and News](#)
- [ASHRAE Society Announcements](#)
- [Follow Bluegrass ASHRAE!](#)
- [Advancing your Membership. It's Easy!](#)

Upcoming Dates:

- [September Chapter Meeting: Sep 18th](#)
- [Bluegrass ASHRAE Golf Scramble: Oct 11th](#)
 - [Registration due by Oct 4th](#)

[A Letter From The President](#)

Bluegrass Chapter Members,

Hello and welcome back for the 2024-2025 fiscal year! I am honored to serve as your chapter president for this term. First I'd like to take this opportunity to express my gratitude to our chapter Board of Governors leadership. Their dedication and hard work have been crucial in our chapter's success, and I look forward to continuing this tradition of excellence.

This year's society theme, "Empowering Our Workforce: Building a

goals. As our Society president explained, “We all want to be involved in a career that we can be passionate about and where we can find meaning and purpose.” As we are all well aware, we are living in a time of rapid change in our industry with the ongoing low GWP refrigerant changeover and continuing decarbonization shift. As these technologies evolve, we must also ensure the workforce has the ability to improve and evolve along with it. I hope our chapter can contribute to these efforts and help to continue growing our industry.

Our chapter has a full year of programs and events planned, starting with our first chapter meeting discussing “Hydronic Balancing” to be held September 18th at Thermal Equipment Sales. We will also be sending out information for our annual golf scramble to benefit ASHRAE Research at Houston Oaks on October 11th. Please be sure to stay tuned for additional announcements regarding our monthly meetings and events through our website, bluegrassashrae.org, as well as our monthly newsletter.

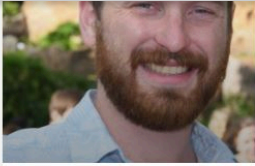
Thank you to all our members and supporting companies for your continued support to our chapter. I am excited about the possibilities this year holds and look forward to working with all of you.

Joshua Rice, PE
President, Bluegrass Chapter



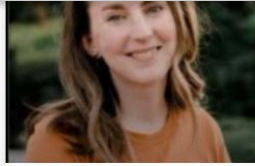
2024-2025 Chapter Officers

Welcome to the 2024-2025 chapter year in Bluegrass ASHRAE from this year's Officers! From new programs to familiar events we all look forward to, we are very excited for what's in store in the year ahead.



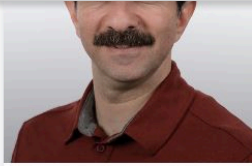
Joshua Rice, PE

President



Laura Hollenbach

President-Elect



Diego Rich

Treasurer



Davis Betts

Secretary

Interested in getting more involved with our chapter? Reach out to any of our BOG members and learn how!

Contact Info

September Chapter Meeting

Hydronic Balancing

When: May 15, 12-1pm

Summary: A session on why hydronic balancing is important, with an overview of balancing methods and how they relate to both the TAB process as well as operating efficiencies. Being mindful of how balancing directly impacts start up, long term pump/unitary performance, and occupant comfort is crucial to total system success.



Presenter: Kirk Phipps | Director of Sales, Hays Fluid Controls

Starting with Hays Fluid Controls in 2009, Kirk Phipps has now spent over

the Director of Sales managing a team of regional managers and providing consultation within the market segments of Commercial HVAC, Plumbing, Industrial Process, and onboard systems for both the US Navy and private marine vessels.

Where:

TES

680 Bizzel Drive

Lexington, KY 40510

Ticket Options (In Person Only):

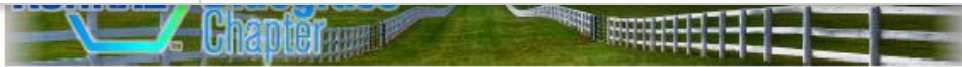
Member - \$15

Non-Member - \$20

Student Member - FREE

[RSVP Here](#)

[Bluegrass ASHRAE Golf Scramble](#)



11th Annual Bluegrass ASHRAE Invitational Golf Outing

Open to public guests

Friday, October 11, 2024

Houston Oaks Golf Course

Register by October 4, 2024

100% of Proceeds to Benefit ASHRAE Research Promotion

Event Schedule:

- 8-9am breakfast, registration, networking
 - Sign-in & Registration
 - Light breakfast and coffee
 - Buy your mulligans, strings, skirts
 - Driving range open

- 8:45am Announcements & Rules Review
- 9:00am Shotgun Start (scramble format)
 - Cookout boxed lunch on course
 - Beverages avail. to take out on course
- ~3:00pm Awards and door prizes

Tournament Packages:

	8-Person Tournament Packages (2 foursomes)
Title Sponsor – \$2,000	(Includes: 2 Drink Tickets per player, Green Fees, Carts, Qty 2 Tee Signs, & email/website recognition, Company Furnished Banner, & Expo/Trailer Space)
	8-Person Tournament Packages (2 foursomes)
Eagle Sponsor – \$1,100	(Includes: 2 Drink Tickets per player, Green Fees, Carts, Qty 2 Tee Signs, & email/website recognition)
	4-Person Tournament Package (1 foursome)
Birdie Sponsor – \$600	(Includes: 2 Drink Tickets per player, Green Fees, Carts, Tee Sign, & email/website recognition)
Par Sponsor – \$250	Tee Sign, & email/website recognition (no golf)
Mulligan/Skirt/Strings Bundle price - \$50	Maximum amount of Mulligans + Skirt + String

Prizes will be awarded for the following: winners, longest drive, & closest to the pin

Award ceremony immediately following the event

For golf tournament sponsorship opportunities, please contact **Cory Sharrard** at:

859.351.1743 or csharrard@grwinc.com

[Click here to register online](#)

The U.S. General Services Administration (GSA) and U.S. Department of Energy (DOE) **announced** a **Request for Information** on innovative, emerging, and sustainable technologies that enable energy efficiency and decarbonization in commercial buildings, and more efficient electric infrastructure. As part of the Inflation Reduction Act (IRA), GSA is investing \$30 million to improve the sustainability of federal buildings, which this RFI would help advance.

The RFI is specifically looking for novel technologies in the following categories:

- Deep Energy Retrofits
- All-Electric Buildings and All-Electric Vehicle Fleets
- Healthy and Resilient Buildings
- Low-Embodied Carbon Building Materials
- Net-Zero Operations
- Packages of Emerging and Sustainable Technology Solutions

Submissions for the RFI must be technically and commercially ready for evaluation in occupied, operational buildings. Selections will serve as a pilot through a GSA, DOE, or combined program in one of the above categories. The RFI opened for submissions on August 1, 2024, and will remain open until September 13, 2024. If you are interested in submitting to the RFI, please click [here](#) for more information.

New England May Need ‘Vast Renewable Build-Out’ By 2050 to Meet State Decarbonization Goals

New England could require a vast renewable build-out to achieve state decarbonization goals. Most of the region’s six states have set policies to reduce emissions at least 80% from 1990 levels by mid-century, using renewable energy to electrify heating and transportation systems. Current policies will shift New England peak load from summer to winter by the mid-2030s and create large disparities in electricity demand between mild and severe cold weather years. [Read more](#)

September 2024 Digital Journal

In case you missed it - This month’s issue of ASHRAE Journal includes topics such as bringing a forest inside a research center atrium to improve indoor air quality, using hydronic HVAC systems to further decarbonization goals and displacement ventilation in hot climates.

ASHRAE Society Announcements

Region VII 2024 CRC



Thank you to the volunteers who represented the Bluegrass Chapter at this year's Chapter Regional Conference in Memphis, TN. We look forward to next year's conference in Birmingham, AL!

In 2026 our chapter is thrilled to be hosting CRC in Lexington and we will need volunteers to help make the event a success! If you are interested in helping out or just learning more please reach out to Planning Committee Chair, David Rose (david.rose@bigassfans.com).

ASHRAE Jobs Board

Check out the [ASHRAE Jobs Board](#) for useful career tips and tools, relevant job postings in the industry, and to quickly find the right professionals for your open positions.



Follow Bluegrass ASHRAE!

Did you know that we are on LinkedIn and Facebook? Follow us here for the latest and greatest



Are You An Associate Who Wants to Advance to Member?



ASHRAE

1791 Tullie Circle, N.E.
Atlanta, Georgia 30329-2305
404-636-8400
www.ashrae.org

To order additional copies of this brochure, to share with your colleagues, visit the membership page at: www.ashrae.org/members



Connect with ASHRAE

ASHRAE represents the industry's leading HVAC&R professionals, working to make the world a better place to live.



To advance from Associate to Member, you must update your ASHRAE bio online, and notify membership@ashrae.org that you have an updated bio and wish to be considered for grade advancement.

Steps for updating your biography:

2. Hover over the 'Membership & Conferences' tab and select 'My Membership.'
3. Under 'Manage Personal Information,' select 'Change Your Address/View or Edit Your Profile.'
4. Select the 'Edu. Pro. Reg' link located in the blue font above your name. Add all of your educational history, relevant professional licenses and work history.
5. Confirm that your contact information is current by clicking on 'Contact Info.'

For information on what experience qualifies for advancement, please see Section 2.7 of the [ASHRAE Bylaws](#).

Bluegrass ASHRAE

ASHRAE, founded in 1894, is a building technology society with more than 50,000 members worldwide. The Society and its members focus on building systems, energy efficiency, indoor air quality, refrigeration and sustainability within the industry. Through research, standards writing, publishing and continuing education, ASHRAE shapes tomorrow's built environment today.

This email was sent to <<Email Address>>

[why did I get this?](#) [unsubscribe from this list](#) [update subscription preferences](#)

Bluegrass ASHRAE · 801 Corporate Drive · Lexington, KY 40503 · USA

